

# MS RESET ACID

MS Reset Acid is an extremely concentrated detergent that is used in knockdown programs for historical pollution, to reset a category 3 inorganic contamination back to manageable levels before restarting a regular cleaning program.

The product is not for continuous use.

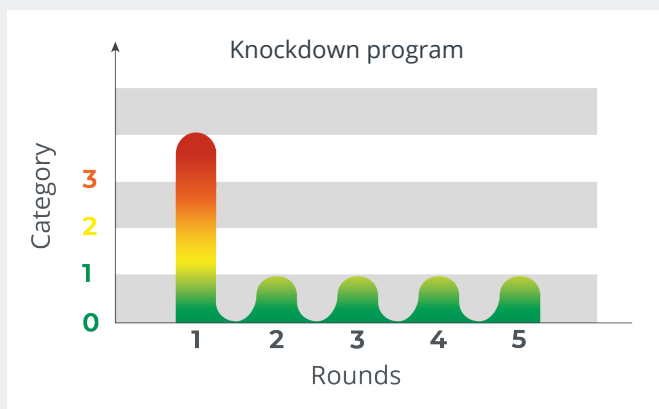
Does not foam.

- Use only during knockdown programs!
- The product is used to reset extremely heavy inorganic contamination back to normal levels before restarting a regular cleaning program for inorganic pollution using MS Reset Acid.
- Effective in removal of heavy organic contamination



## Only use MS Reset Acid in knockdown programs

MS TopFoam Reset Acid used in knockdown programs for historical pollution, to reset a category 3 organic contamination back to manageable levels. Switch back to regular cleaning products after a knockdown program.



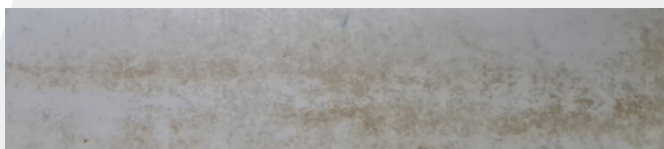
### Application Instructions

- Apply the product through a hand or backpack sprayer
- Use a 100% concentration, no pre-dilution required (preferably through a MS Greenline)
- Let it soak for 5 minutes and then pressure wash clean
- A thick layer of historical pollution might take multiple applications to get through the entire layer

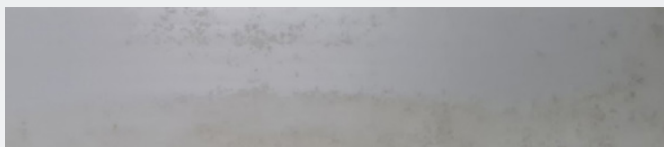
### ORGANIC (Alkaline cleaners)



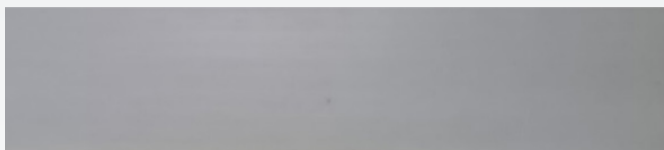
Category 3 - Heavy organic pollution



Category 2 - Medium organic pollution



Category 1 - Light organic pollution



Category 0 - Zero historical pollution

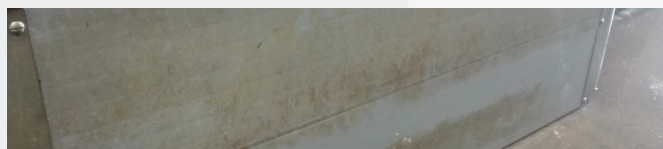
### INORGANIC (Acidic cleaners)



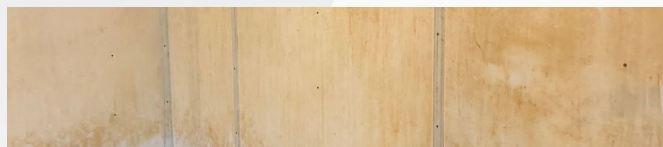
Apply MS TopFoam Reset Acid



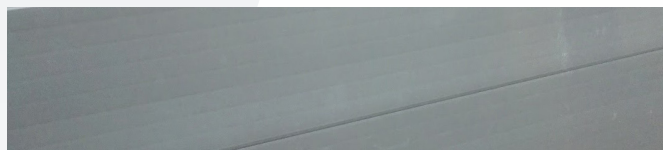
Category 3 - Hydrated lime pollution



Category 2 - Mixed pollution



Category 1 - Iron pollution



Category 0 - Zero historical pollution

#### MS Gold

Smaragdweg 60 | 5527 LB Hapert, The Netherlands  
info@msgold.eu | 0031 497-339774

The **Schippers** Group